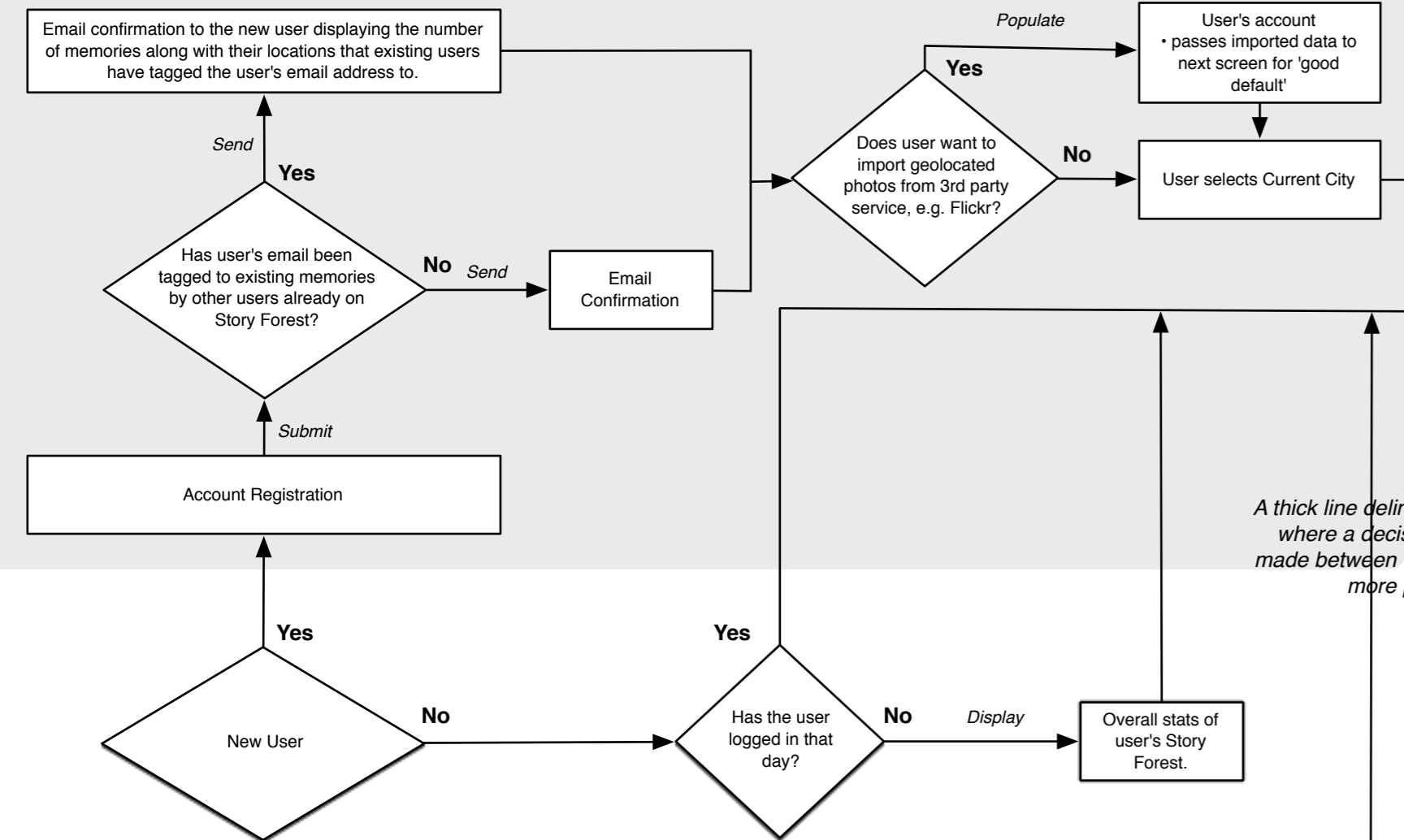
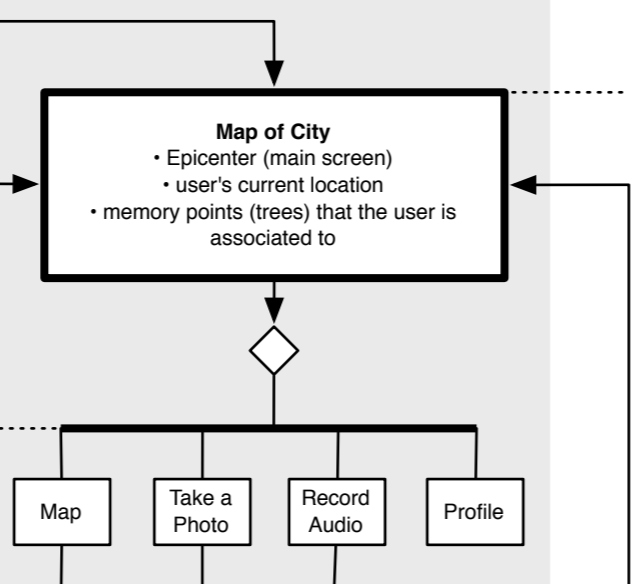


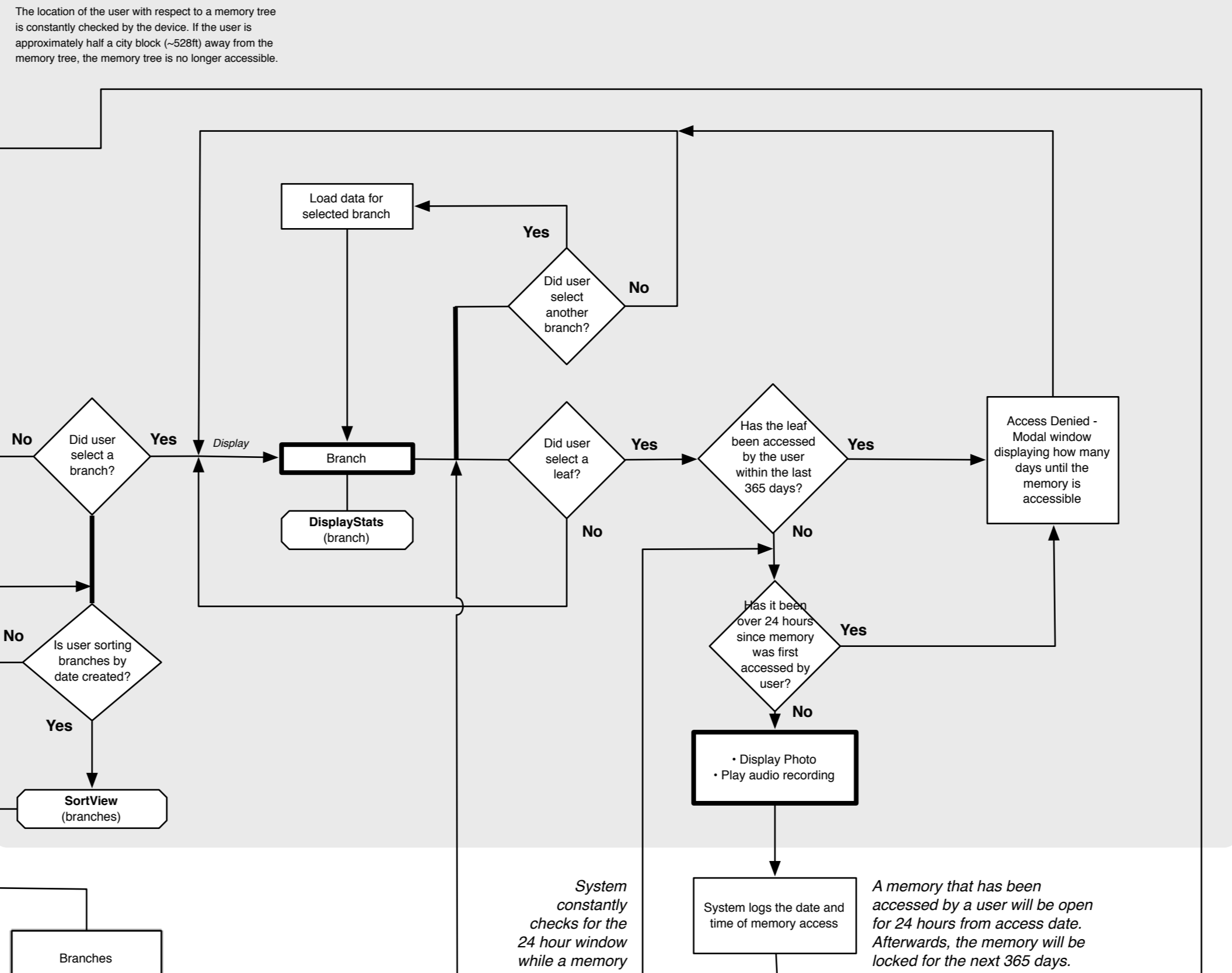
Account Setup



Main Screen

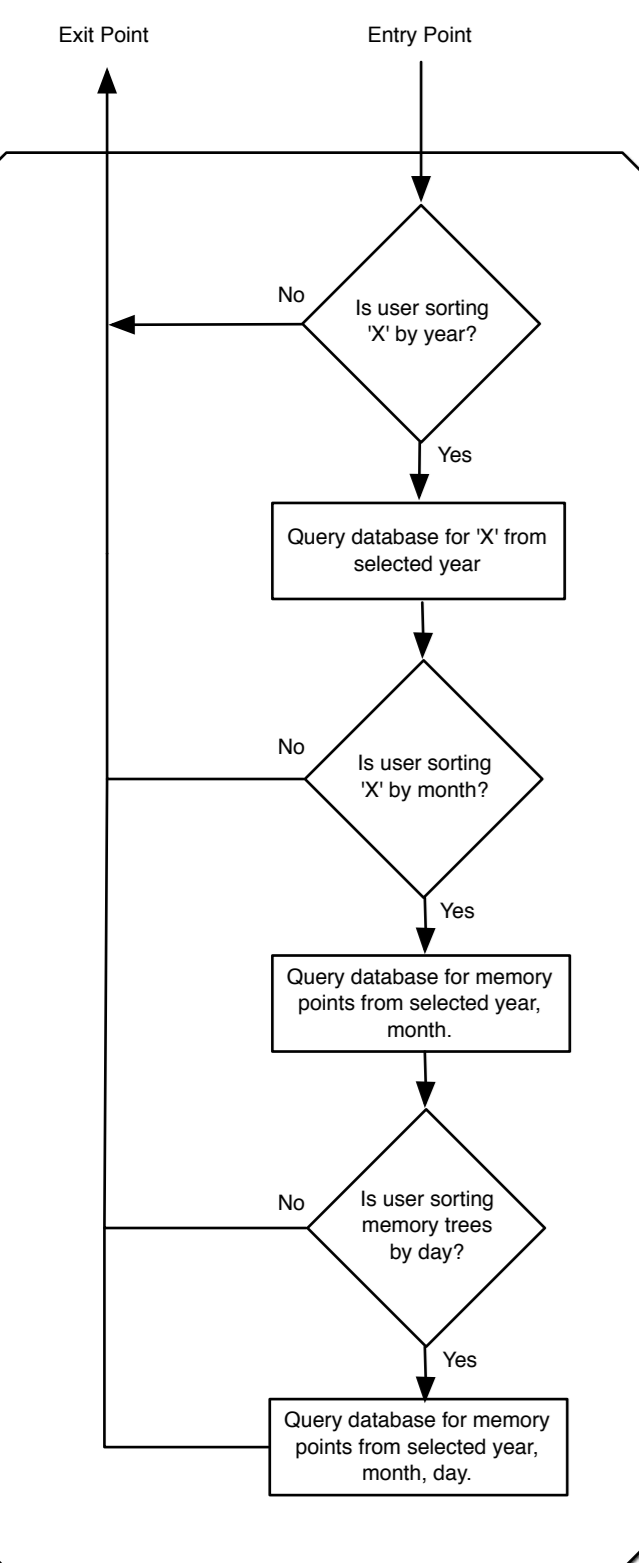


Navigating a Memory Tree



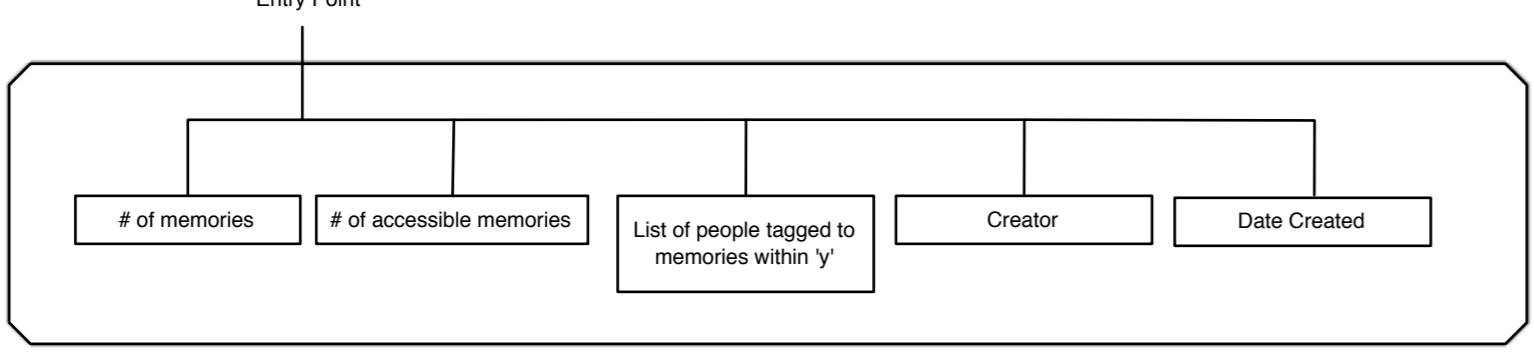
SortView (x)

This component will output data based on the parameter 'x'.

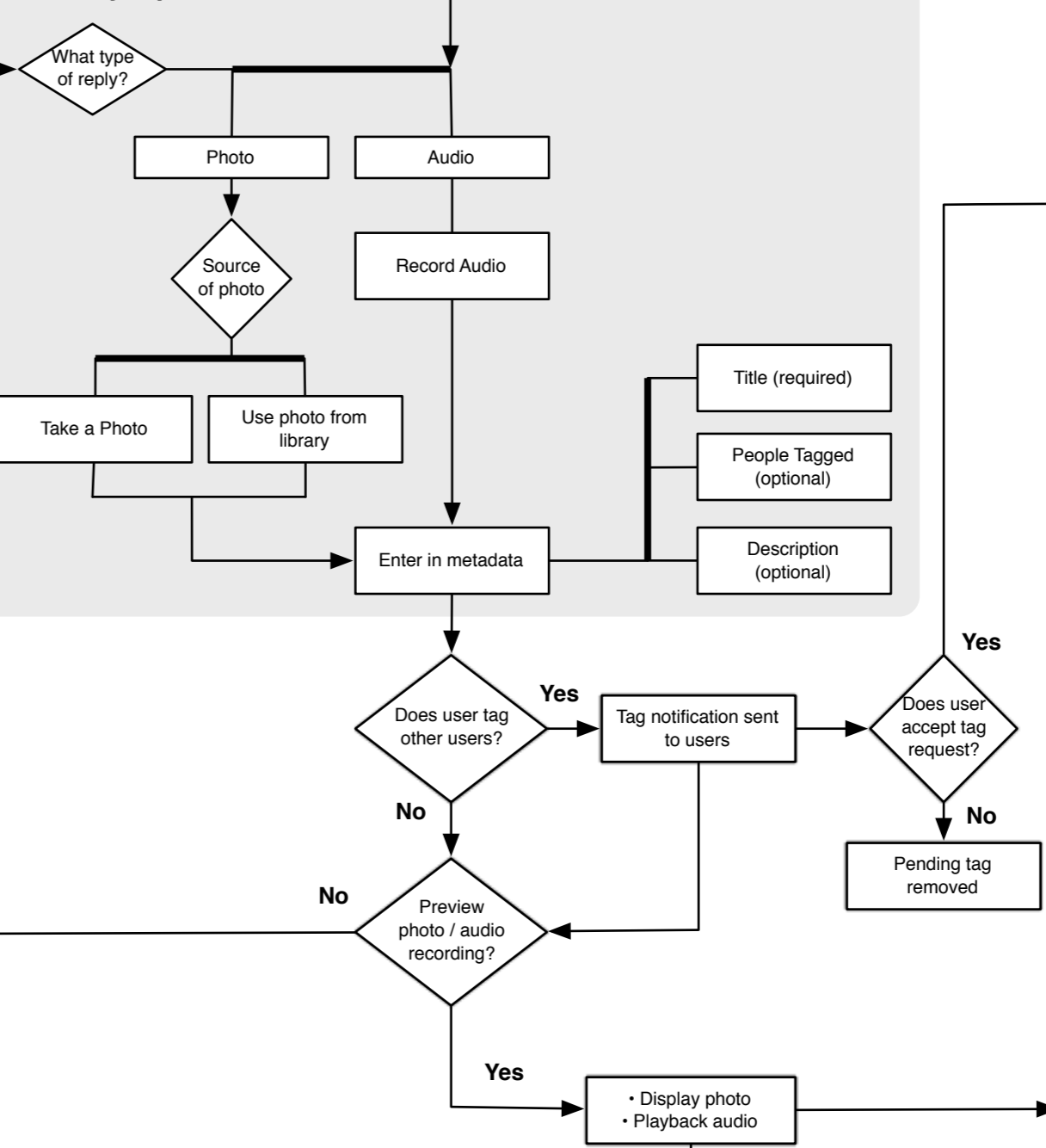


DisplayStats (y)

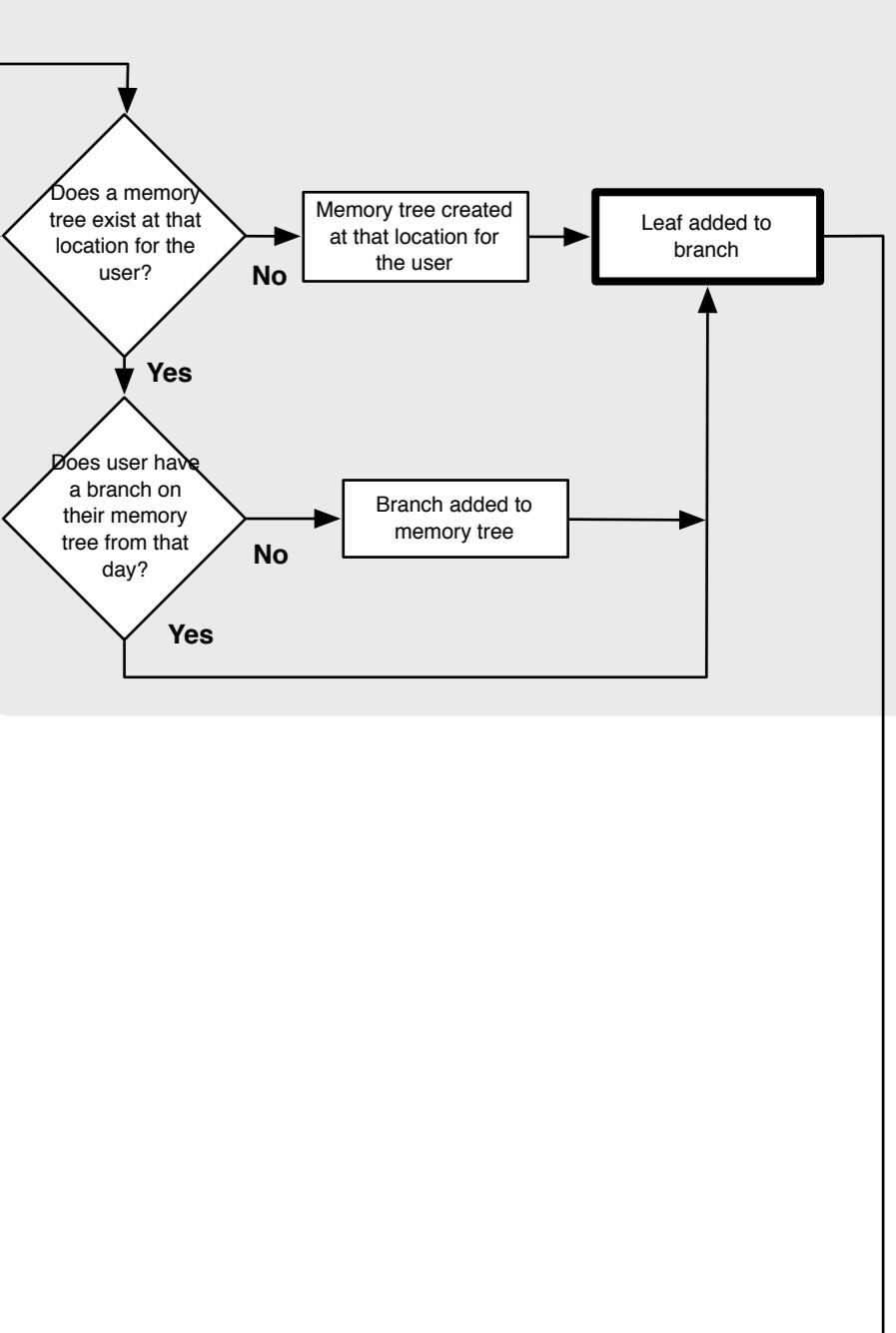
This component displays the statistics based on 'y'.



Memory Input



Tree / Branch / Leaf Formation



Since the map displays all the memory trees within the city, the SortView will be sorting 'memory trees'.

A thick line delineates where a decision is made between two or more paths.

States with thick borders represent primary states of the application.

System constantly checks for the 24 hour window while a memory is still being accessed.

A memory that has been accessed by a user will be open for 24 hours from access date. Afterwards, the memory will be locked for the next 365 days.