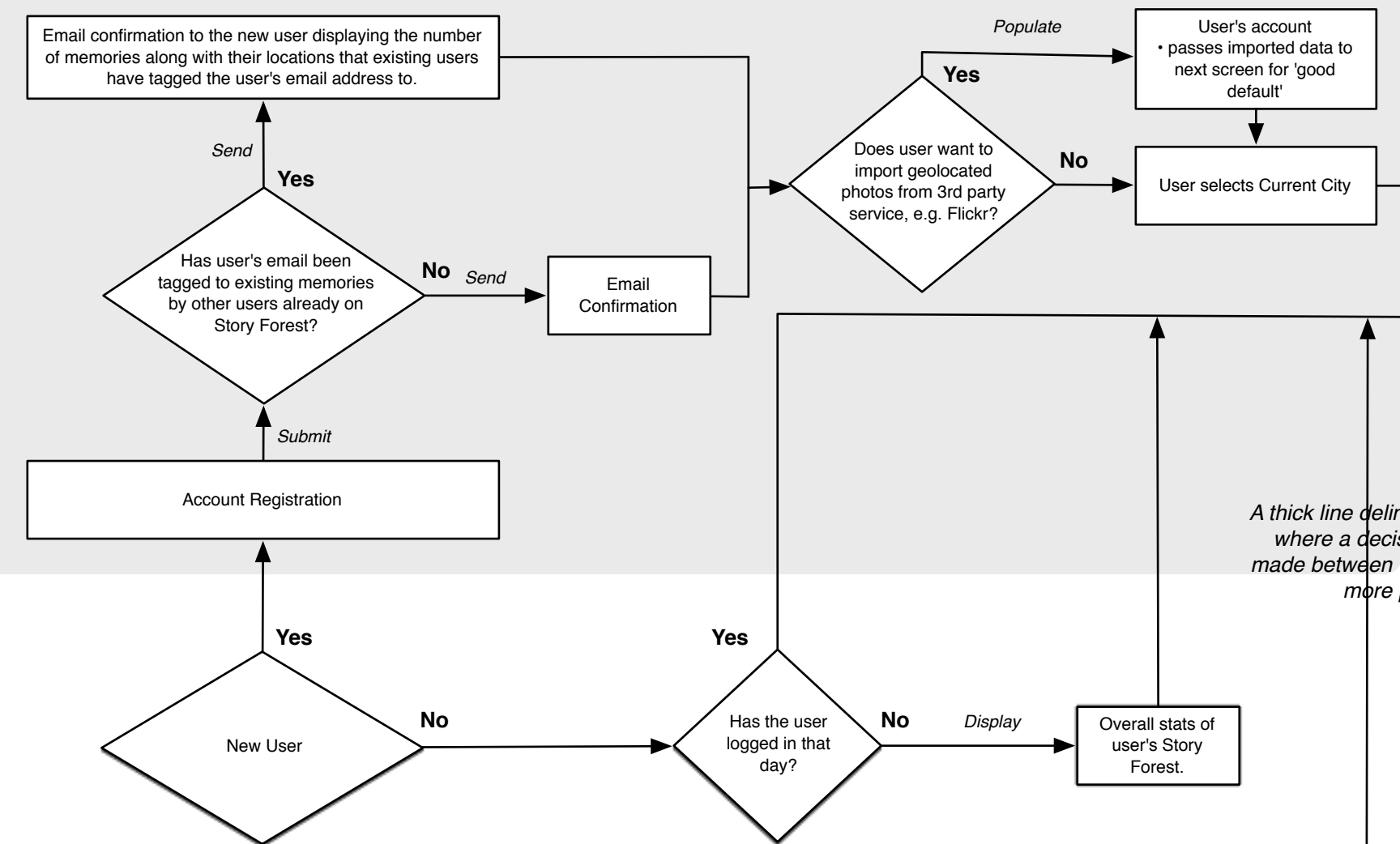
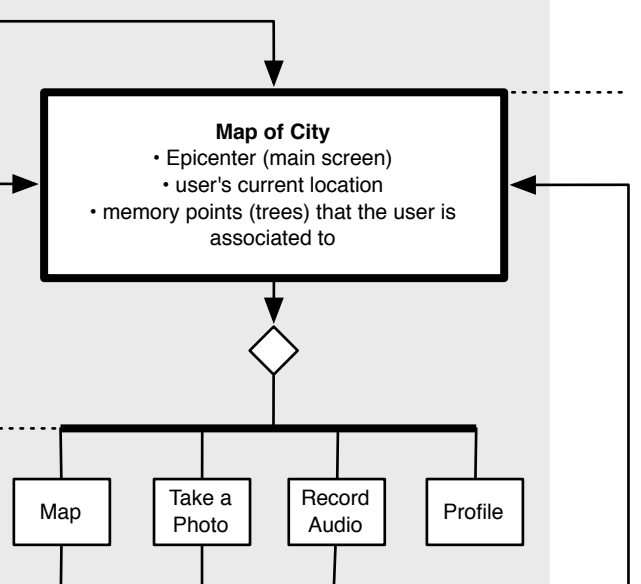


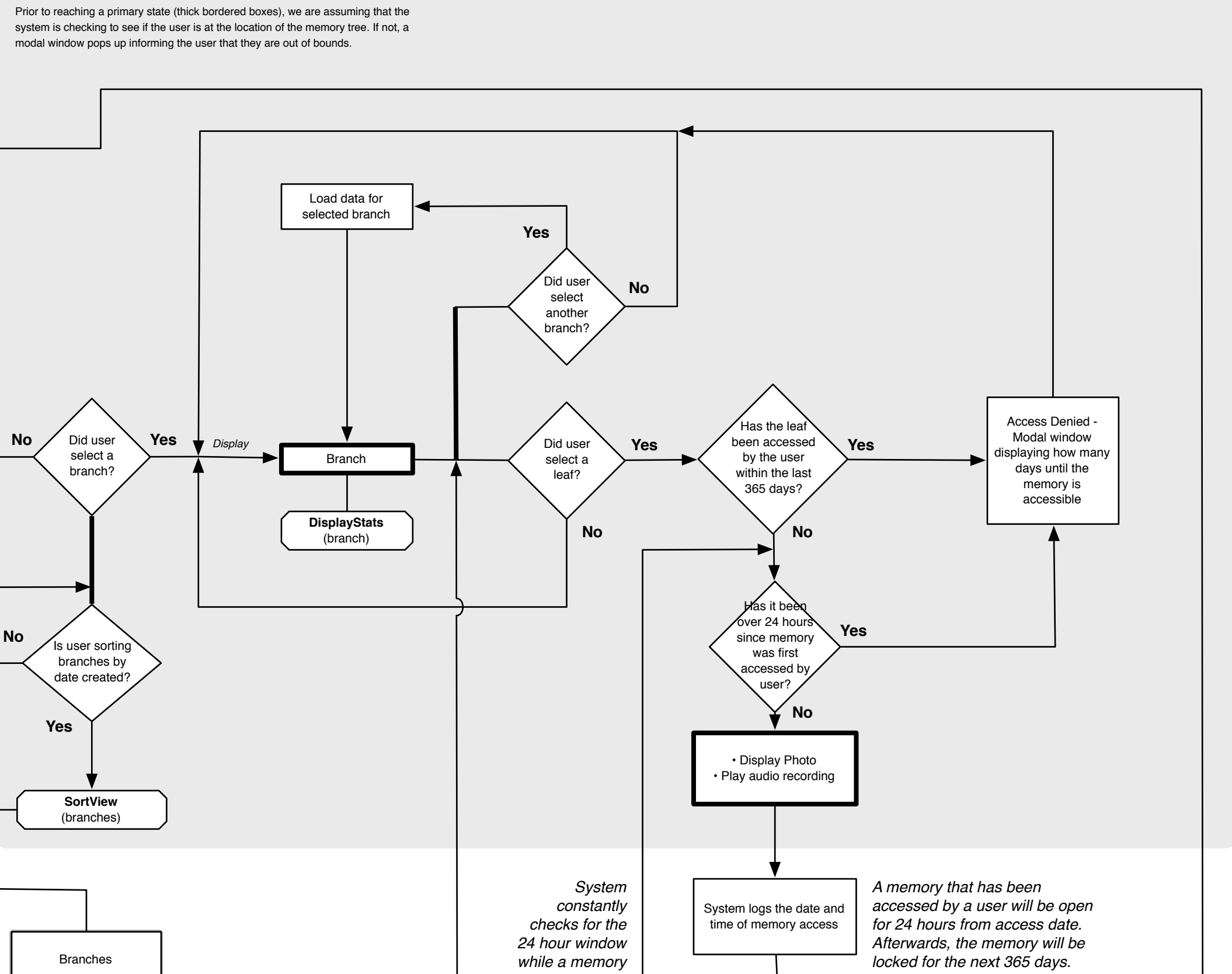
Account Setup



Main Screen



Navigating a Memory Tree



Since the map displays all the memory trees within the city, the SortView will be sorting 'memory trees'.

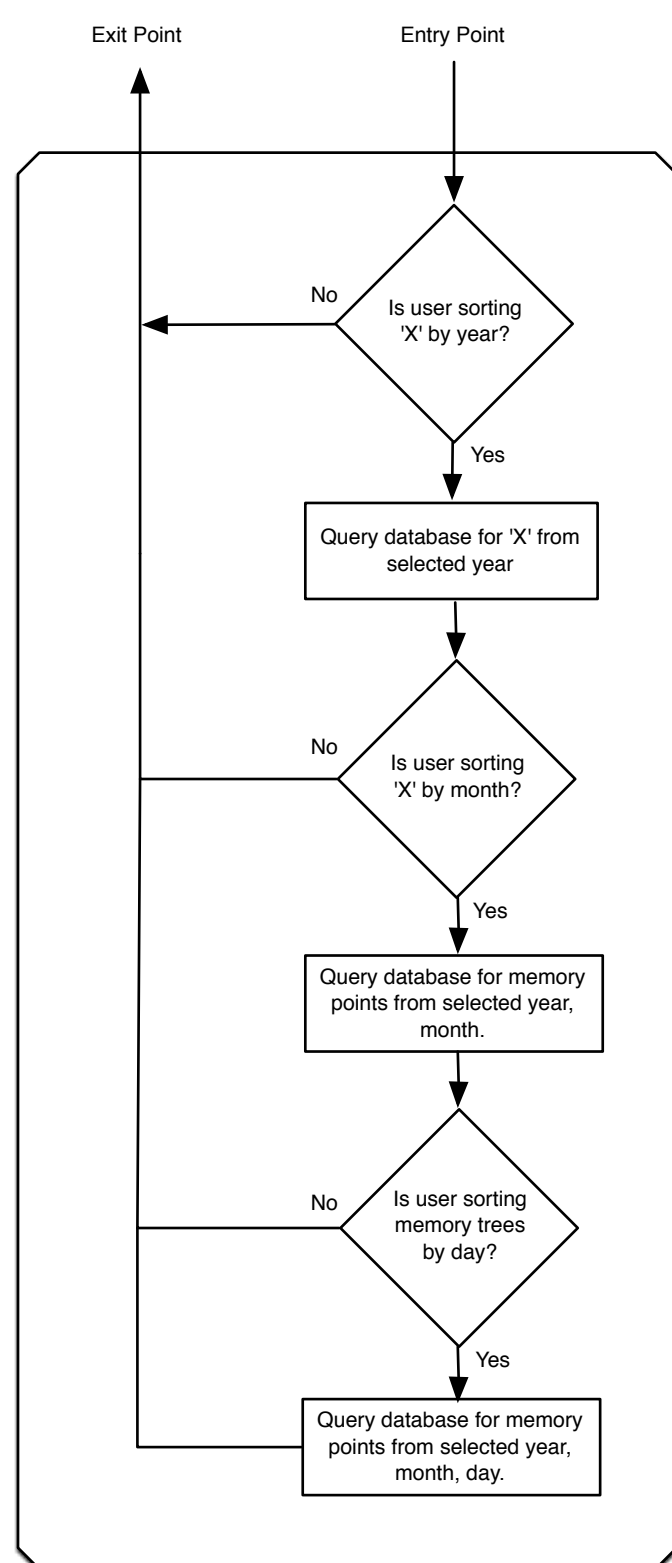
States with thick borders represent primary states of the application.

A thick line delineates where a decision is made between two or more paths.

Prior to reaching a primary state (thick bordered boxes), we are assuming that the system is checking to see if the user is at the location of the memory tree. If not, a modal window pops up informing the user that they are out of bounds.

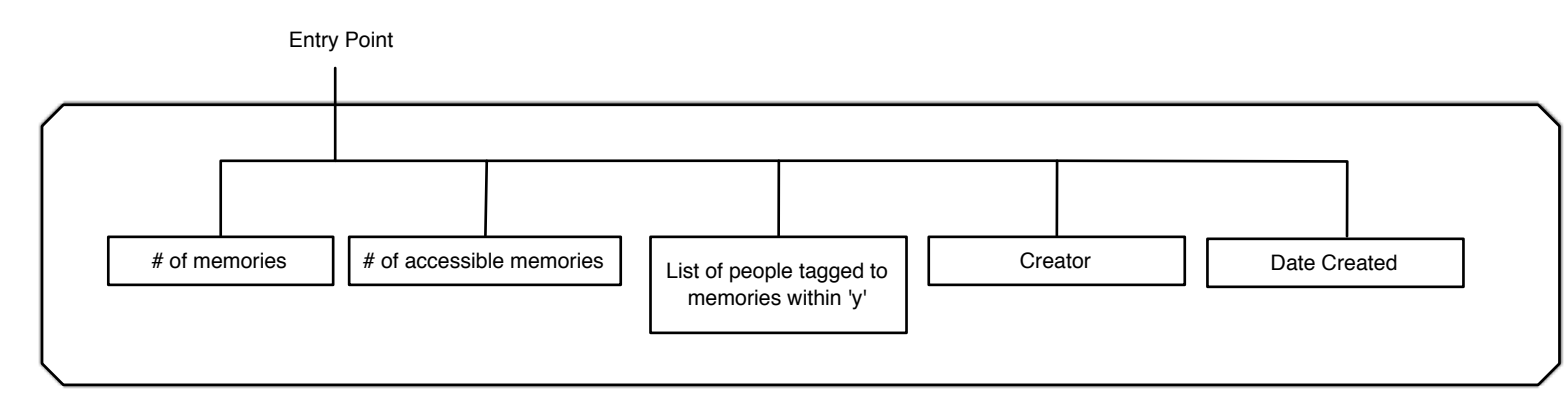
SortView (x)

This component will output data based on the parameter 'x'.

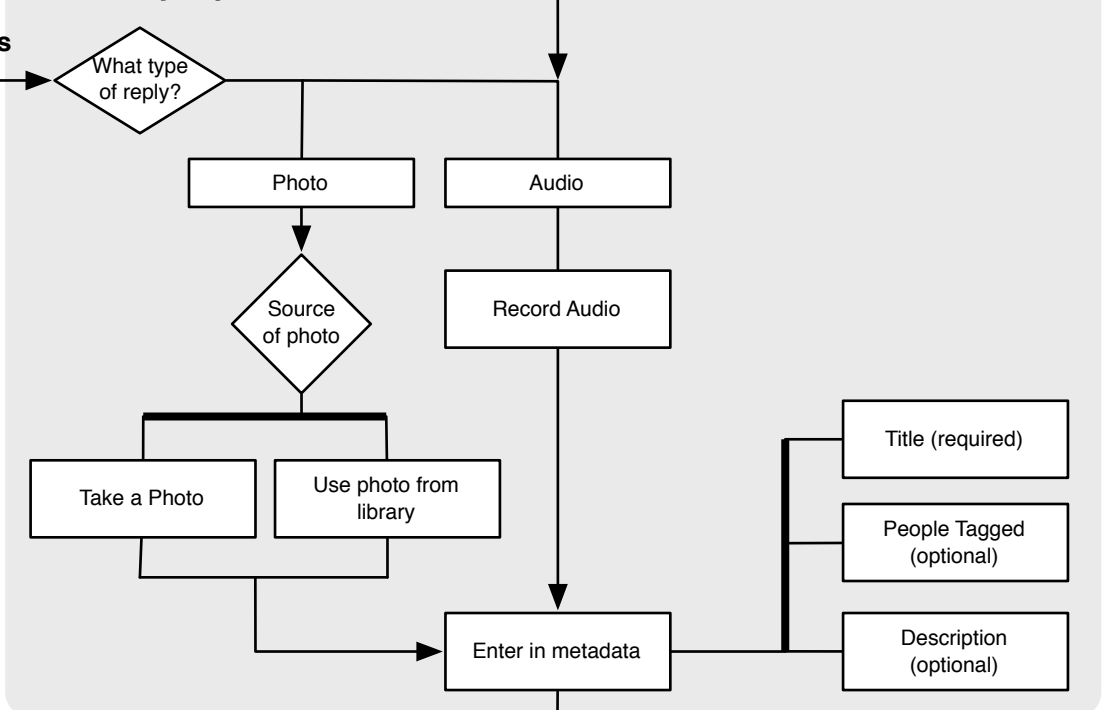


DisplayStats (y)

This component displays the statistics based on 'y'.



Memory Input



Tree / Branch / Leaf Formation

